

MAKER'S delight

Chrissy Lux

As a quilter who loves to play with prints in patchwork, I am excited to bring you a rainbow of colors to play with in **Maker's Delight, my debut collection for Moda Fabrics**. Playful labels, stitch-inspired prints, a few doodles, along with **great basics** make this a fun collection to create with - whether on it's own or mixed in with other favorite prints in your stash. Maker's Delight is about that feeling you get when you're putting together a project and start to get excited about how it is coming together. Seeing **color combinations** shine, **fussy cut motifs** come to life, and **low volume prints** adding a special



little something in the background and thinking to yourself, "Oh, this is going to be so good!" Maker's Delight is also about the joy found in **giving handmade gifts** to others. The **panel** included in this collection includes **quilt corner labels** with a **variety of sentiments** to add to your projects. I hope these will be a heartfelt addition to quilts made in celebration of the people you love - **for birthdays, graduations, weddings, or just being an amazing friend**. I hope you'll find as much joy in sewing with Maker's Delight as I have in creating it for you.



SEPTEMBER DELIVERY *moda*

♡♡

New Designer!
Chrissy Lux

♡♡



Chrissy Lux is a life long crafter who has been sewing various bags, totes, and quilts for **over 20 years**. In 2010, she and her mother, Linda, started **Sew Lux Fabric**, an online fabric shop. Fast forward a few years, Chrissy designed a pouch to sell some Mini Charm packs. Kits sold out quickly and the idea for a **monthly pouch club** was born! Sew Lux has successfully run a monthly pouch club **since 2017**, delighting customers each month with a new project. Since 2017, club offerings have expanded to include **pillow and table runner projects**.

Chrissy believes the best part of being a maker is showing **care for others** through the **gift of a handmade project**. This is why you will find so many patterns for **small and useful projects**. Not only do they make great gifts, but they can easily fit into a busy schedule.

In addition to Sew Lux Fabric, Chrissy also designs patterns under the brand name **Branch & Blume**. This line of patterns includes **quilts, table runners, pillows, and more**, while pouches continue to be released under the Sew Lux brand. One of her goals in pattern writing is to make patterns that are straightforward for shops to kit, often incorporating precuts. She strives to design projects that quilters of **all skill levels** can find success and joy in making.

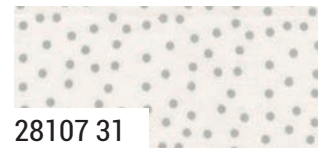
MAKER'S delight *Chrissy Lux*



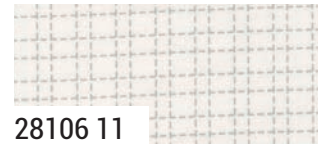
28101 11*



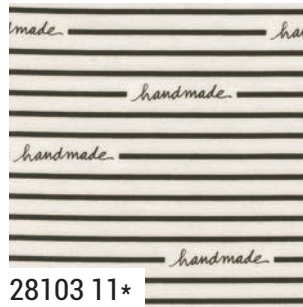
28105 31



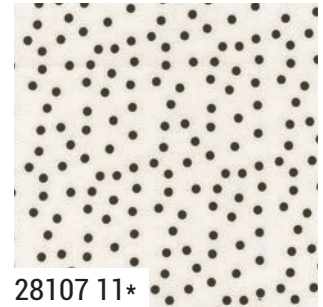
28107 31



28106 11



28103 11*



28107 11*



28102 11*



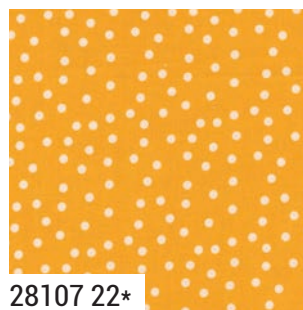
28107 12



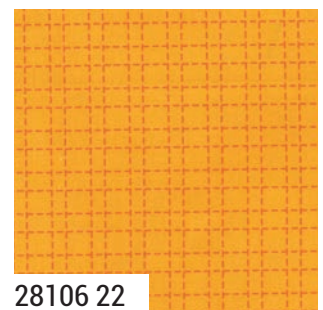
28101 31



28100 11*



28107 22*



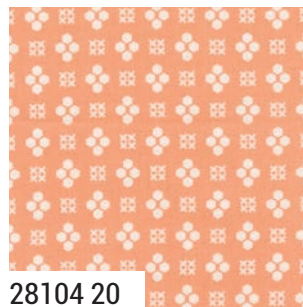
28106 22



28102 28



28107 19



28104 20



28100 20*

Bella Solid Coordinates

moda SEPTEMBER DELIVERY

MAKER'S delight

Chrissy Lux



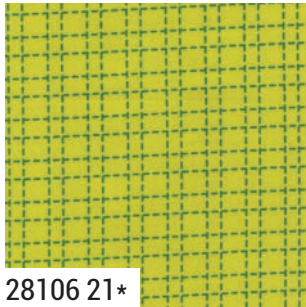
28100 31*



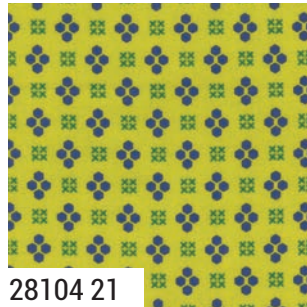
28105 11*



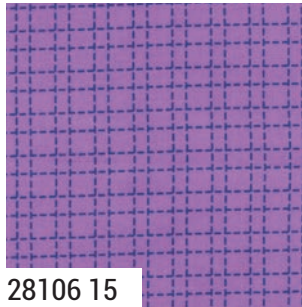
28102 24*



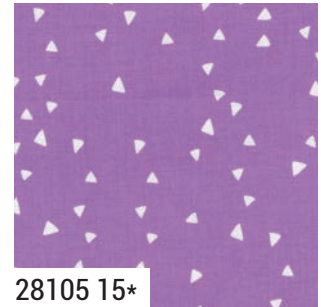
28106 21*



28104 21



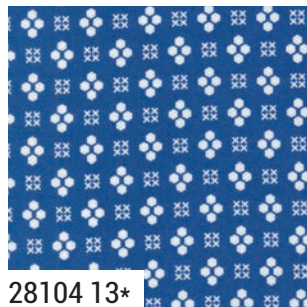
28106 15



28105 15*



28105 14



28104 13*



28101 23*



28100 14*



28100 16



28103 18



28104 18*



28105 17*



28100 23*



28103 23*



28107 23



28105 23*

28100 **Asst. 15** **Asst. 10** **Low Cal 10** **BAst. 15** **AB** **JR** **LC** **MC** **PP** **DT** **SEPTEMBER DELIVERY**

•36 Prints •100% Premium Cotton
 AB includes 35 skus. JRs, LCs, MCs & PPs include 35 skus with two each of 28105-11 - 23.
 Precuts do not include panel. Bella Solid Coordinates are not included in assortments or precuts.

9900 266 ACID GREEN

9900 303 SUGAR PLUM

9900 235 BLUE CHILL

9900 223 SHOCKING PINK

9900 96 SUPER BLACK

Bella Solid Coordinates

MAKER'S delight *Chrissy Lux*



28108 11 Panel Size: 24" x 44". Block Size" 9" x 11". Triangle Size: Approx. 6" x 6".



WEB PATTERN Panel Sentiments Pillow
18" x 18" by Branch and Blume
Pattern will be available on the Moda website in September.



BNB 2404 Heartstrings Drawstring Bag
6" x 6" x 2" MC Friendly by Branch and Blume

MAKER'S delight Chrissy Lux



BNB 2305 Bright Hope Quilt
56" x 65" AB Friendly by Branch and Blume
Also available as a digital top shop sample



BNB 2602 Sparkle Star Quilt 76" x 76"
by Branch and Blume



BNB 2601 Stitch Work Sampler 68" x 78"
by Branch and Blume



BNB 2603 Witherspoon Quilt
66" x 78" LC Friendly
by Branch and Blume