







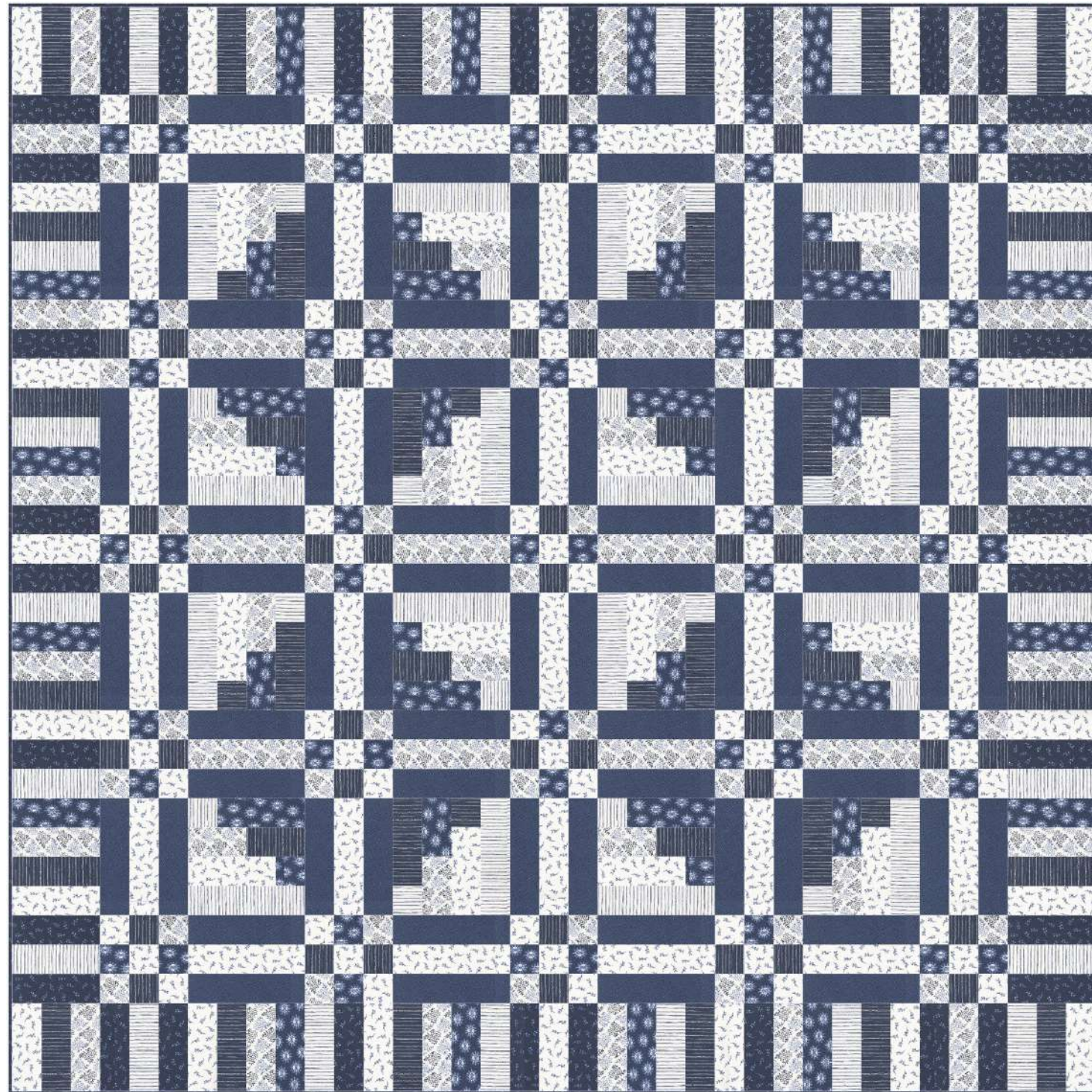




Yardage Requirements	1 Quilt	10 Quilts
 <b>24631 12</b> 	Blocks <b>1 yd</b>	10 yds
 <b>24631 17</b> 	Blocks <b>7/8 yd</b>	8 3/4 yds
 <b>24633 11</b> 	Blocks <b>3/4 yd</b>	7 1/2 yds
 <b>24633 15</b> 	Blocks <b>2/3 yd</b>	6 2/3 yds
 <b>24634 14</b> 	Blocks <b>1/2 yd</b>	5 yds
 <b>24635 16</b> 	Blocks <b>1 1/4 yds</b>	12 1/2 yds
 <b>24636 11</b> 	Blocks <b>1 1/2 yds</b>	15 yds
 <b>24637 11</b> 	Backing <b>4 1/4 yds</b>	42 1/2 yds
 <b>24635 16</b> 	Binding <b>1/2 yd</b>	5 yds






Yardage Requirements		1 Quilt	10 Quilts
	<b>24632 17</b> 7 52106 82036 4	Blocks <b>3/4 yd</b>	7 1/2 yds
	<b>24633 11</b> 7 52106 82037 1	Blocks <b>1 yd</b>	10 yds
	<b>24634 11</b> 7 52106 82041 8	Blocks <b>2/3 yd</b>	6 2/3 yds
	<b>24634 15</b> 7 52106 82043 2	Blocks <b>3/4 yd</b>	7 1/2 yds
	<b>24635 16</b> 7 52106 82050 0	Blocks <b>1 1/4 yds</b>	12 1/2 yds
	<b>24636 11</b> 7 52106 82054 8	Blocks <b>1 1/2 yds</b>	15 yds
	<b>24636 16</b> 7 52106 82056 2	Blocks <b>1/2 yd</b>	5 yds
	<b>24633 17</b> 7 52106 82040 1	Backing <b>4 1/2 yds</b>	45 yds
	<b>24636 16</b> 7 52106 82056 2	Binding <b>3/4 yd</b>	7 1/2 yds

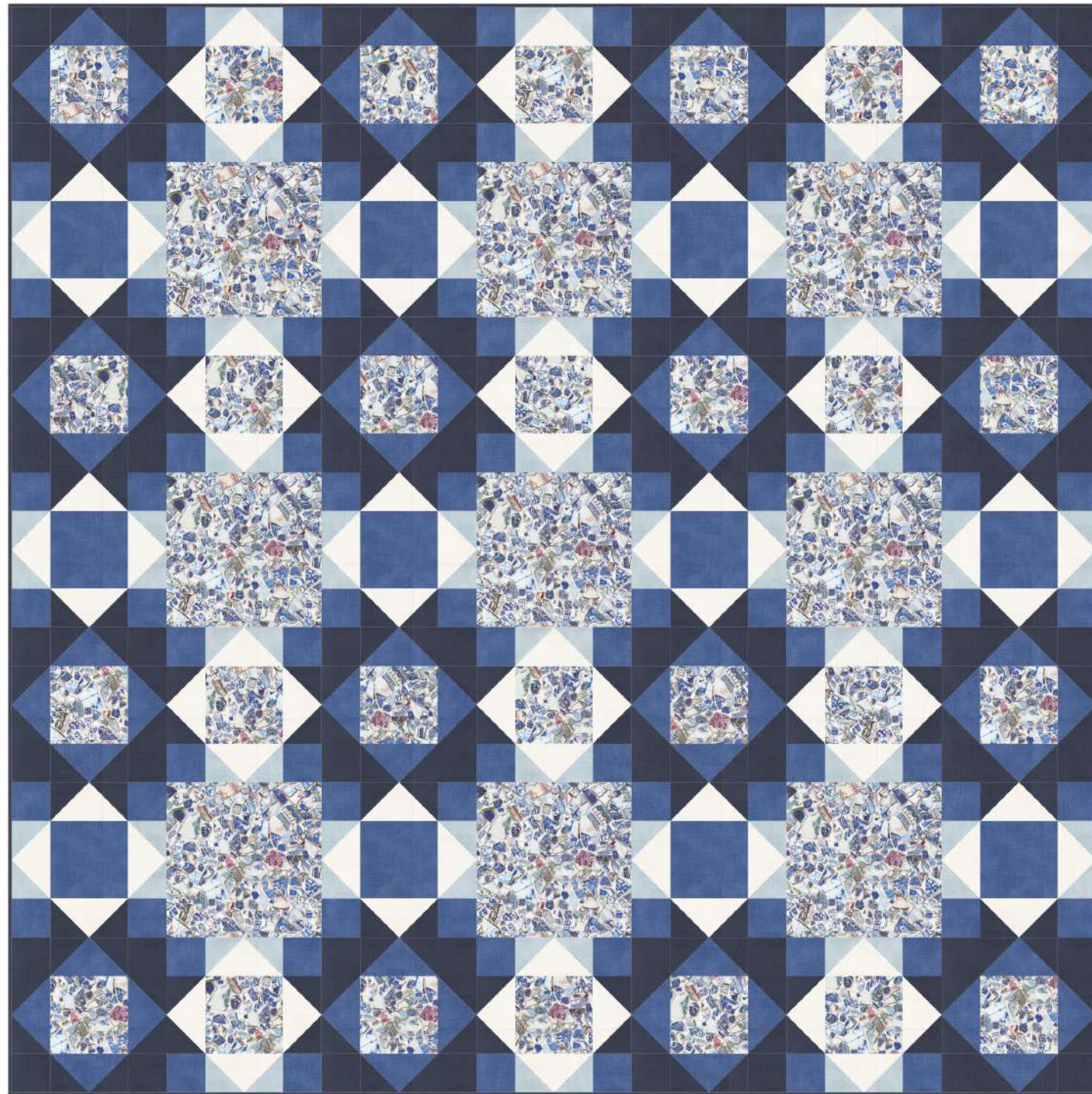












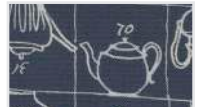





Yardage Requirements		1 Quilt	10 Quilts
	<b>24630 11</b> 7 52106 82029 6	Blocks <b>2 yds</b>	20 yds
	<b>24633 15</b> 7 52106 82039 5	Blocks <b>1 yd</b>	10 yds
	<b>24634 14</b> 7 52106 82042 5	Blocks <b>1 1/2 yds</b>	15 yds
	<b>24635 16</b> 7 52106 82050 0	Blocks <b>1 1/4 yds</b>	12 1/2 yds
	<b>24636 11</b> 7 52106 82054 8	Blocks <b>1 1/2 yds</b>	15 yds
	<b>24636 16</b> 7 52106 82056 2	Blocks <b>1 1/4 yds</b>	12 1/2 yds
	<b>24637 11</b> 7 52106 82057 9	Blocks <b>1 1/2 yds</b>	15 yds
	<b>24632 11</b> 7 52106 82034 0	Backing <b>4 1/2 yds</b>	45 yds
	<b>24634 14</b> 7 52106 82042 5	Binding <b>3/4 yd</b>	7 1/2 yds







Yardage Requirements		1 Quilt	10 Quilts
	<b>24620 13</b> 	Blocks <b>1 1/4 yds</b>	12 1/2 yds
	<b>24620 14</b> 	Blocks <b>2/3 yd</b>	6 2/3 yds
	<b>24620 15</b> 	Blocks <b>2 1/4 yds</b>	22 1/2 yds
	<b>24620 16</b> 	Blocks <b>2 1/4 yds</b>	22 1/2 yds
	<b>24630 11</b> 	Blocks <b>2 1/4 yds</b>	22 1/2 yds
	<b>24631 17</b> 	Backing <b>7 2/3 yds</b>	76 2/3 yds
	<b>24620 16</b> 	Binding <b>3/4 yd</b>	7 1/2 yds

**Polly (Put the Kettle On)** by Janet Clare

JC 262 • 84" x 84" • Retail



5 065010 551251





**Yardage Requirements**

**1 Quilt**      10 Quilts



**24633 15**



Blocks

**2 1/2 yds**      25 yds

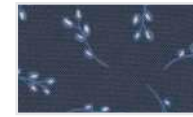


**24636 11**



Blocks

**3 yds**      30 yds



**24636 16**



Blocks

**4 1/4 yds**      42 1/2 yds

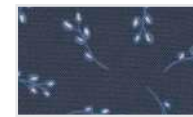


**24631 13**



Backing

**7 2/3 yds**      76 2/3 yds

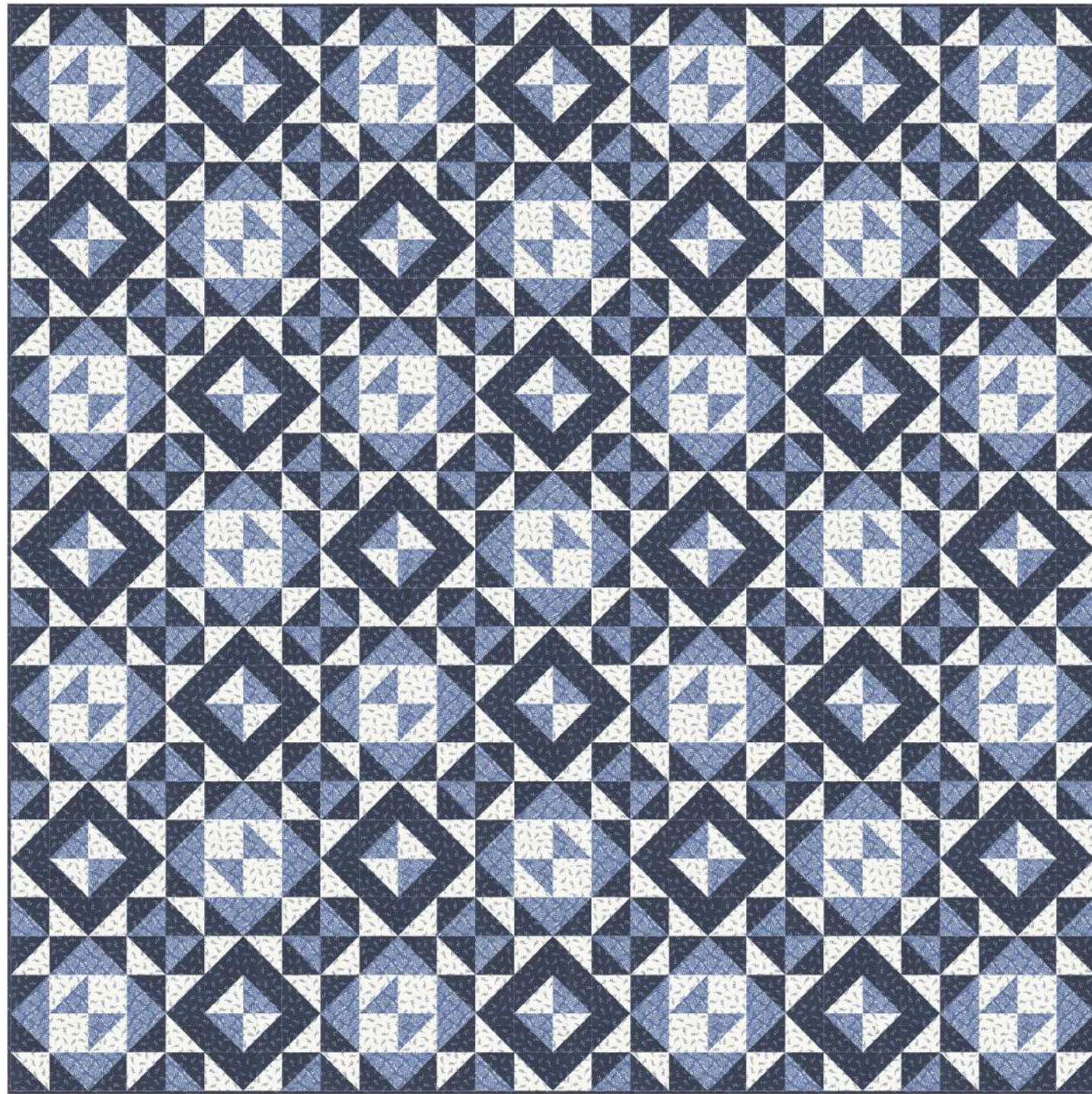


**24636 16**



Binding

**3/4 yd**      7 1/2 yds





### Yardage Requirements



**24630AB**



7 52106 82024 1



**24620 13**



7 52106 82058 6



**24636 12**



7 52106 82055 5



**24620 16**



7 52106 82061 6

**1 Quilt**      10 Quilts

Blocks

**1 AB Bundle**      10 AB Bundles

Background

**3 1/3 yds**      33 1/3 yds

Backing

**4 1/2 yds**      45 yds

Binding

**1/2 yd**      5 yds

**PRECUT FRIENDLY**



7 68253 92052 9





### Yardage Requirements

- 
**24630AB**  
 7 52106 82024 1
- 
**24620 13**  
 7 52106 82058 6
- 
**24630 12**  
 7 52106 82030 2
- 
**24620 16**  
 7 52106 82061 6

- |                    |               |
|--------------------|---------------|
| <b>1 Quilt</b>     | 10 Quilts     |
| Blocks             |               |
| <b>1 AB Bundle</b> | 10 AB Bundles |
| Background         |               |
| <b>2 1/3 yds</b>   | 23 1/3 yds    |
| Backing            |               |
| <b>4 1/2 yds</b>   | 45 yds        |
| Binding            |               |
| <b>1/2 yd</b>      | 5 yds         |

