

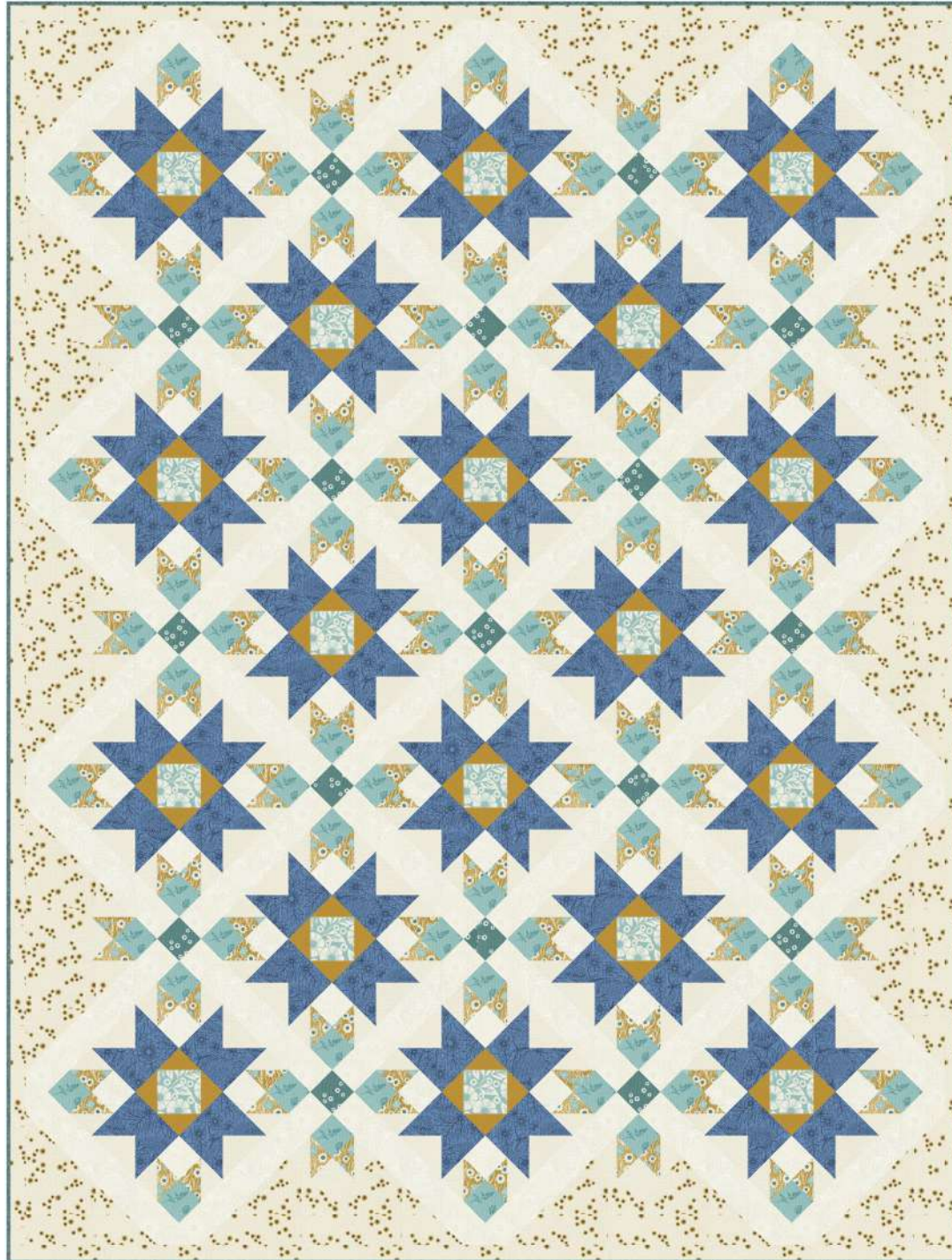


**Provence**

**My Wandering Path • 62" x 82"**

**MWP 220**

**Retail**



Yardage Requirements	1 Quilt	10 Quilts
----------------------	---------	-----------

 **3311 14**  
7 52106 79867 0

Blocks  
**1/4 yd** 2 1/2 yds

 **3312 13**  
7 52106 79870 0

Blocks  
**5/8 yd** 6 1/4 yds

 **3314 17**  
7 52106 79880 9

Blocks  
**1 1/2 yds** 15 yds

 **3316 15**  
7 52106 79887 8

Blocks  
**1/8 yd** 1 1/4 yds

 **3317 14**  
7 52106 79891 5

Blocks  
**1/2 yd** 5 yds

 **9900 244**  
7 52106 02447 2

Blocks  
**1/3 yd** 3 1/3 yds

 **9900 182**  
7 52106 92491 8

Background  
**1 2/3 yds** 16 2/3 yds

 **3314 21**  
7 52106 79882 3

Sashing  
**1 1/3 yds** 13 1/3 yds

 **3316 11**  
7 52106 79886 1

Setting triangles, border  
**1 1/2 yds** 15 yds

 **3310 19**  
7 52106 79865 6

Backing  
**5 yds** 50 yds

 **3314 15**  
7 52106 79879 3

Binding  
**7/8 yd** 8 3/4 yds

FIELD OF FLOWERS  
KATHARINE WATSON



moda  
FABRICS + SUPPLIES®

**Variable Star**

Moda • 60" x 75"

MOD 118

Retail



**Tying the Knot**

Happy Quilting • 90" x 90"

HQ 134

Retail



**Yardage Requirements**

1 Quilt

10 Quilts



**3310LC**



Blocks

**1 LC**

10 LCs



**9900 182**



Background

**3 1/8 yds**

31 1/4 yds



**3310 13**



Backing

**4 3/4 yds**

47 1/2 yds



**9900 109**



Binding

**5/8 yd**

6 1/4 yds

**Yardage Requirements**

1 Quilt

10 Quilts



**3310AB**



Blocks, binding

**1 AB**

10 ABs



**30150 101**



Background

**7 yds**

70 yds



**3310 12**



Backing

**8 1/4 yds**

82 1/2 yds



**Double Dutch**

Happy Quilting • 84" x 84"

HQ 136

Retail



Yardage Requirements	1 Quilt	10 Quilts
----------------------	---------	-----------



**3310 14**  
7 52106 79864 9

Blocks  
**FQ** 2 1/2 yds



**3311 14**  
7 52106 79867 0

Blocks  
**FQ** 2 1/2 yds



**3311 18**  
7 52106 79868 7

Blocks  
**FQ** 2 1/2 yds



**3312 16**  
7 52106 79871 7

Blocks  
**FQ** 2 1/2 yds



**3312 19**  
7 52106 79872 4

Blocks  
**FQ** 2 1/2 yds



**3313 16**  
7 52106 79875 5

Blocks  
**FQ** 2 1/2 yds



**3313 19**  
7 52106 79876 2

Blocks  
**FQ** 2 1/2 yds



**3314 15**  
7 52106 79879 3

Blocks  
**FQ** 2 1/2 yds



**3314 17**  
7 52106 79880 9

Blocks  
**FQ** 2 1/2 yds



**3314 19**  
7 52106 79881 6

Blocks  
**FQ** 2 1/2 yds



**3315 18**  
7 52106 79885 4

Blocks  
**FQ** 2 1/2 yds



**3316 15**  
7 52106 79887 8

Blocks  
**FQ** 2 1/2 yds



**3316 16**  
7 52106 79888 5

Blocks  
**FQ** 2 1/2 yds



**3316 18**  
7 52106 79889 2

Blocks  
**FQ** 2 1/2 yds



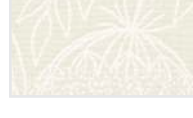
**3317 14**  
7 52106 79891 5

Blocks  
**FQ** 2 1/2 yds



**3317 17**  
7 52106 79892 2

Blocks  
**FQ** 2 1/2 yds



**3314 21**  
7 52106 79882 3

Background  
**4 1/4 yds** 42 1/2 yds



**3310 12**  
7 52106 79862 5

Backing  
**5 2/3 yds** 56 2/3 yds



**3310 19**  
7 52106 79865 6

Binding  
**2/3 yd** 6 2/3 yds





**Ellie Pillow**

Branch & Blume • 20" x 20"

BNB 2401 Retail 



Yardage Requirements	1 Quilt	10 Quilts
----------------------	---------	-----------

 **3310LC**  
 7 52106 79859 5

Blocks  
**1 LC** 10 LCs

 **9900 182**  
 7 52106 92491 8

Background  
**1/8 yd** 1 1/4 yds

 **3310 12**  
 7 52106 79862 5

Backing  
**2/3 yd** 6 2/3 yds

**Swoop**

Branch & Blume • 60" x 72"

BNB 2403 Retail 



Yardage Requirements	1 Quilt	10 Quilts
----------------------	---------	-----------

 **3310AB**  
 7 52106 79857 1

Blocks  
**1 AB** 10 ABs

 **9900 182**  
 7 52106 92491 8

Background  
**1 1/8 yds** 11 1/4 yds

 **3310 14**  
 7 52106 79864 9

Backing  
**4 yds** 40 yds

 **3314 15**  
 7 52106 79879 3

Binding  
**5/8 yd** 6 1/4 yds