







Collection for a Cause

*Unity*

*by Howard Marcus*

**COLLECTION FOR A CAUSE** is an ongoing program begun by owner Howard Marcus Dunn, featuring antique prints from our collection and supporting charities and causes that touch the hearts and lives of all of us.

The latest Collections for a Cause, Unity, revisits and reimagines prints from previous Collections and also brings in new prints painstakingly recreated from antique quilts and textile mill books in the Dunn Family archive. Decadent and bold Jacobean florals, swirling paisley, moire stripes, delicate floral sprays, and delightful dots come together in a warm, rich palette of chocolate, cognac, fern, ivory, deep teal, and a pop of bright peony to create a collection that is at once deeply nostalgic and surprisingly fresh.

Proceeds from the Unity collection will be donated to Feeding America, the nation's largest domestic hunger-relief organization. The Feeding America network of food banks, pantries, and meal programs serves virtually every community in the United States.

**Benefiting Feeding America**

**[FeedingAmerica.org](http://FeedingAmerica.org)**

**FEBRUARY DELIVERY**



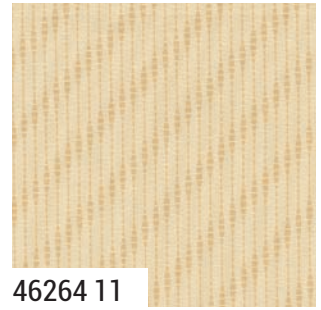
Collection for a Cause *Unity* by Howard Marcus



46260 11\*



46267 11



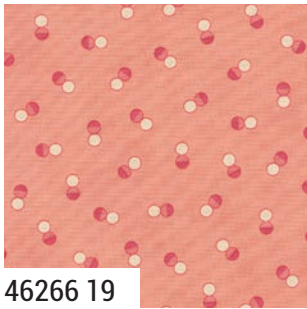
46264 11



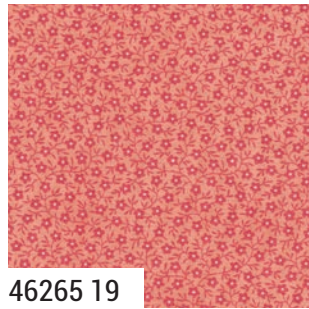
46268 31



46261 11\*



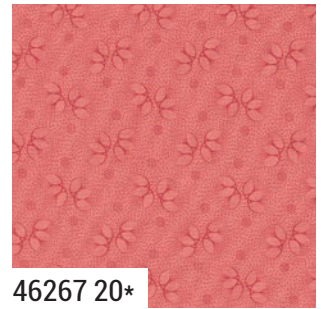
46266 19



46265 19



46263 19\*



46267 20\*



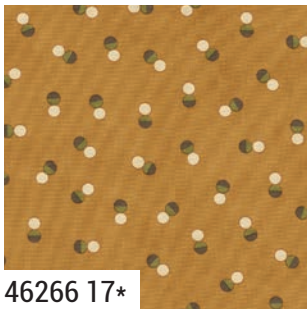
46263 11\*



46262 11\*



46268 38



46266 17\*



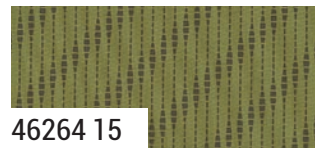
46267 18\*



46268 35\*



46267 16\*



46264 15

*moda* FEBRUARY DELIVERY



Collection for a Cause *Unity* by Howard Marcus



46261 12\*



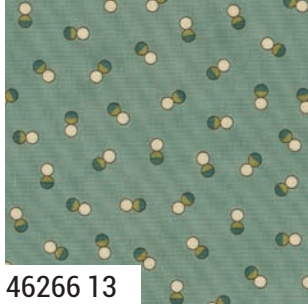
46267 12



46263 12\*



46260 12\*



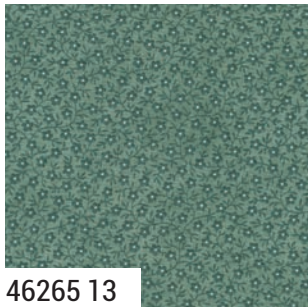
46266 13



46267 13



46262 14\*



46265 13



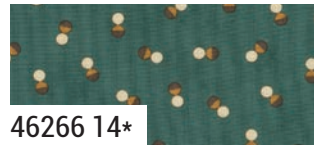
46268 14



46261 14\*



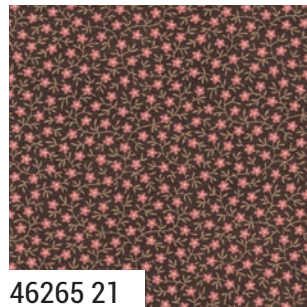
46264 14



46266 14\*



46260 21\*



46265 21



46263 21\*



46262 21



46267 21



46261 21\*



46266 21



46264 21\*

46260

Asst. 15

Asst. 10

Low Cal 10

AB

F8

JR

LC

MC

PP

KIT

FEBRUARY DELIVERY

•37 Prints •100% Premium Cotton

AB & F8 includes all 37 skus. JRs, LCs, MCs & PPs include 27 skus with two each of 46260.



projects



**AQD 310** Nine by Nine 66" x 78" AB Friendly  
by Antler Quilt Designs



**HQ 101** Summer Breeze 75" x 75" LC Friendly  
by Happy Quilting



**MWP 225** I'll Fly Away 67" x 67" F8 Friendly  
by My Wandering Path  
Also features fabric from Sagewood by Crystal Manning



**WS 03** Maisons de Patchwork 76" x 86"  
by Wendy Sheppard



Collection for a Cause *Unity* by Howard Marcus



**KIT  
46260**

AQD 305 Country Roads 64" x 80" AB Friendly  
by Antler Quilt Designs  
Also features fabric from Itty Bitty Background Gatherings by Primitive Gatherings